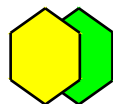


PERFORMANCE RECORDS

2015

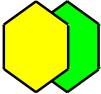


SEST CO.,LTD.

8-37, MIEUM SANDAN-RO, GANGSEO-GU, BUSAN, KOREA
TELEPHONE : 82-51-920-1000
FACSIMILE : 82-51-920-1096-7

	PREQUALIFICATION SUMMARY	DOC. NO.	PQ - F - MV-001
		SECTION	0.1
	0.1 TABLE OF CONTENTS	DATE	Jun.17, 2015
		PAGE	1 OF 1

SECTION	TITLE	REMARKS
0.1	TABLE OF CONTENTS	
1.0	GENERAL INFORMATION	
1.1	COMPANY PROFILE	
1.2	BRIEF HISTORY	
2.0	COMPANY ORGANIZATION	
3.0	BUSINESS GUIDE	
4.0	LICENSE AND PERMIT	
5.0	QUALITY CONTROL PROCESS	
5.1	QUALITY ASSURANCE ACTIVITY PROCESS	
5.2	NCR TREATMENT FLOW-CHART	
6.0	PERFORMANCE RECORDS	
7.0	SHOP FACILITIES	
7.1	MAJOR FACILITY	
7.2	MEASURING & TEST EQUIPMENT	
8.0	TECHNICAL STANDARD	
9.0	CATALOGUE	

 SEST	PREQUALIFICATION SUMMARY	DOC. NO.	PQ - F - MV-001
		SECTION	1.0
	1.0 GENERAL INFORMATION	DATE	Jun.17, 2015
		PAGE	1 OF 2

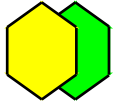
1.1 COMPANY PROFILE

- 1.1.1 REGISTERED NAME : SEST CO.,LTD
- 1.1.2 FOUNDED : ARP. 17, 1995.
- 1.1.3 ADDRESS : 8-37, MIEUM SANDAN-RO, GANGSEO-GU,
BUSAN, KOREA
- POSTAL NO. : 618-260
 - TELEPHONE : 82-51-920-1000
 - FACSIMILE : 82-51-920-1096~7
 - HOMEPAGE : www.sestco.com
 - E-Mail : sest@sestco.com
- 1.1.4 DIRECTING MANAGER : MAN-JONG, KIM
- 1.1.5 CAPITAL : ₩1,400,000,000(WON)
- 1.1.6 EMPLOYEE : 40 MEN
- 1.1.7 SHOP AREA AND BUILDING
- LAND : 2816 M2
 - BUILDING : 2739 M2
- 1.1.8 GROWTH
- 1999 : ₩3,050,000,000(WON)
 - 2000 : ₩3,200,000,000(WON)
 - 2001 : ₩4,300,000,000(WON)
 - 2002 : ₩4,800,000,000(WON)
 - 2003 : ₩6,500,000,000(WON)
 - 2004 : ₩5,861,000,000(WON)
 - 2005 : ₩7,507,000,000(WON)
 - 2006 : ₩6,865,000,000(WON)
 - 2007 : ₩6,572,000,000(WON)
 - 2008 : ₩11,500,000,000(WON)
 - 2009 : ₩10,184,000,000(WON)
 - 2010 : ₩13,853,000,000(WON)
 - 2011 : ₩16,300,000,000(WON)
- 1.1.9 CORRESPONDENT BAN : THE WOORI BANK OF KOREA

	PREQUALIFICATION SUMMARY	DOC. NO.	PQ - F - MV-001
		SECTION	1.0
	1.0 GENERAL INFORMATION	DATE	Jun.17, 2015
		PAGE	2 OF 2

1.2 BRIEF HISTORY

- Jul. 1977. Established individual enterprise (Sumjin Industrial Company)
- Jan. 1983. Reorganized as Sumjin Industries Co. of educational foundation (No.1 Factory)
- Dec. 1987. Entered into technical cooperation agreement on Filter Press with NORITAKE Co. of Japan.
- Apr.1995. Established Sumjin Industries Co.,Ltd.
- Jan. 1996. Qualified by the government as an exporter and importer
- Apr. 1996. Completed No.2 factory at Sasang-Ku, Busan
- Jan. 1999. Obtained a manufacturing license for the specialized facilities from Korea Gas Safety Corporation.
- Sep. 2000. Moved at New Factory from Sasang-Ku to Kangseo-Ku, Busan
- Dec. 2000. Certified a ISO-9001 for Design, Manufacturing & Service of Pressure Vessel and Heat Exchanger & Filter Press Packages by Bureau Veritas Quality International (BVQI/UKAS)
- Feb. 2001. Established Reserch Institute, HydroLab in Sumjin Industries Co.,Ltd.
- Jan. 2002. Changed the firm name, SUMJIN EST Co., Ltd.
- Mar. 2003. Obtained a Confirmation of Venture Business from Small Business Administration(SBA).
- Apr. 2003. Obtained a Certificate of Reserch Institute, HydroLab in SUMJIN EST Co., Ltd.
- Mar. 2004. Registered as a manufacturer by Korea Association of Machinery Industry
- Mar. 2004. Obtained a Environment Technology Certificate from Ministry of Environment.



SEST

PREQUALIFICATION SUMMARY

2.0 COMPANY ORGANIZATION

DOC. NO.

PQ - F - MV-001

SECTION

2.0

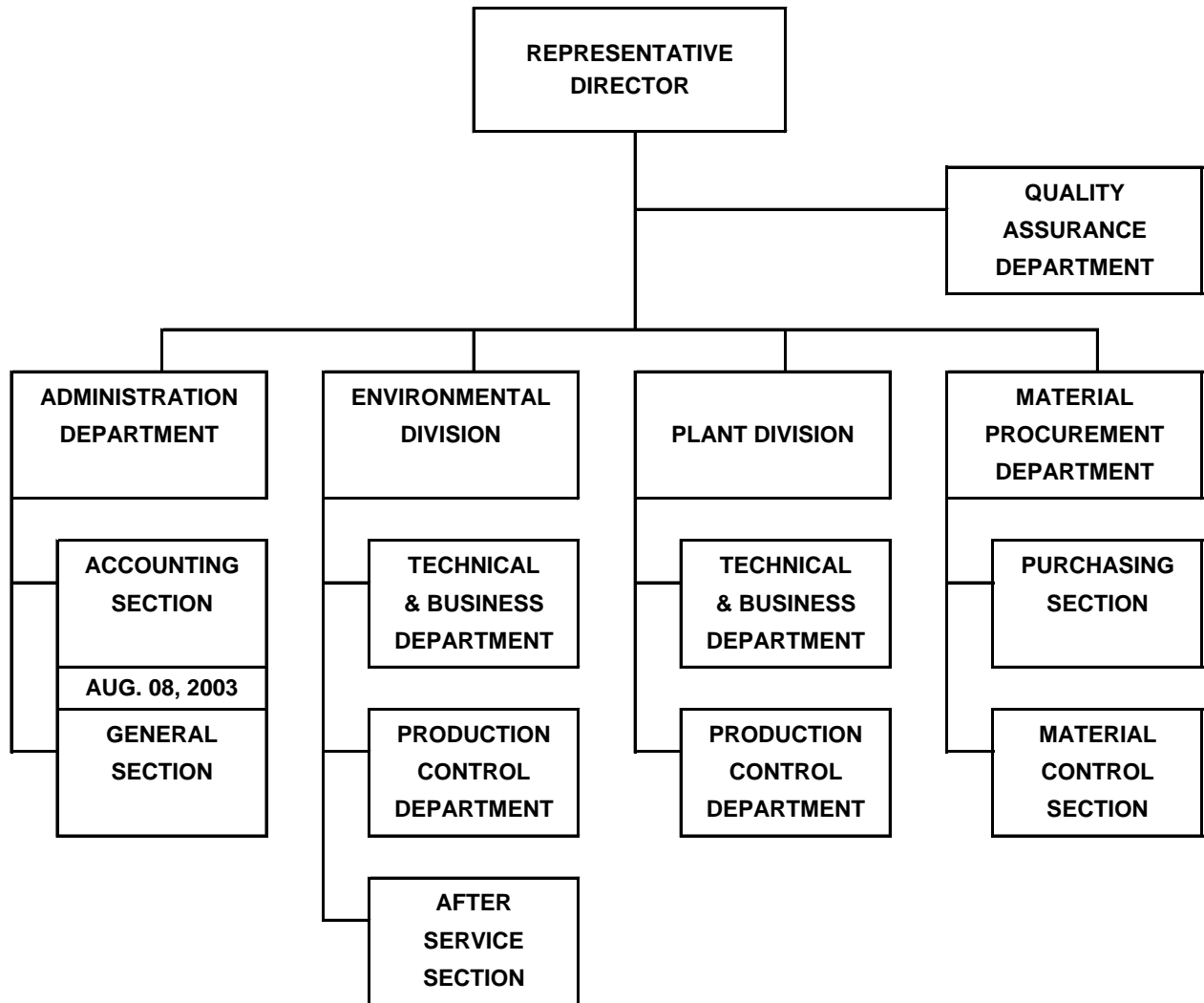
DATE

Jun.17, 2015

PAGE

1 OF 1

2.1 ORGANIZATION CHART



 SEST	PREQUALIFICATION SUMMARY	DOC. NO.	PQ - F - MV-001
		SECTION	3.0
	3.0 BUSINESS GUIDE	DATE	Jun.17, 2015
		PAGE	1 OF 2

3.1 FILTER PRESS

- 3.1.1 TYPE
 - ▶ PILOT, MANUAL, SEMI-AUTO, AUTOMATIC, FULL AUTOMATIC
- 3.1.2 FILTER PLATE TYPE
 - ▶ PLATE & FRAME, RECESS, MEMBRANE
- 3.1.3 FILTER PLATE MATERIAL
 - ▶ P.P, STAINLESS, CASTING(FC,FCD,AL) etc
- 3.1.4 APPLICATION
 - ▶ CHEMICAL INDUSTRY
 - ▶ METTALLURGICAL INDUSTRY
 - ▶ MINING, FOOD AND BEVERAGE INDUSTRY
 - ▶ MINERALS EARTH INDUSTRY
 - ▶ WASTE WATER TREATMENT

3.2 INDUSTRIAL MACHINERY

- 3.2.1 CHEMICAL PLANT
 - ▶ SHEET LINE
 - ▶ ROOFING LINE
 - ▶ SHEET DRYER LINE
- 3.2.2 CHEMICAL MACHINE
 - ▶ SCREEN MILL
 - ▶ SILVERSON MIXER
 - ▶ KNEEDER
 - ▶ CYCLONE
 - ▶ HOMOGENIZER
 - ▶ UNWINDING CARRIER
 - ▶ BELT CONVEYOR
 - ▶ SCREW CONVEYOR

 SEST	PREQUALIFICATION SUMMARY	DOC. NO.	PQ - F - MV-001
		SECTION	3.0
	3.0 BUSINESS GUIDE	DATE	Jun.17, 2015
		PAGE	2 OF 2

3.3 PETROCHEMICAL PLANT

3.3.1 PACKAGE SYSTEM WITH FIELD CONSTRUCTION

- ▶ LUBE OIL REFINERY PLANT
- ▶ TRANSFORMER OIL REFINERY PLANT
- ▶ WASTE OIL RECOVERY PLANT
- ▶ SOLVENT DEWAXING PLANT
- ▶ ASPHALT PRODUCT PLANT
- ▶ OIL DISTILLATION UNIT
- ▶ OIL DEWATERING UNIT
- ▶ PARAFFIN UNIT
- ▶ V.I.I UNIT
- ▶ OIL STORAGE TANK

3.3.2 PETROCHEMICAL FACILITIES ▶ TOWER WITH TRAY

- ▶ REACTOR WITH AGITATOR
- ▶ DEAERATOR
- ▶ PRESSURE VESSEL
- ▶ HEATER
- ▶ COOLER
- ▶ REBOILER
- ▶ CONDENSER
- ▶ HEAT EXCHANGER

3.4 MANUFACTURING CAPACITY

Description	Maximum		Size		Ton /Year	Material	Remarks
	Weight (Ton)	Th'k (mm)	I.D (mm)	Length (mm)			
Filter Press	80	75	1500	18000	800	▶ C.S ▶ S.S	
Industrial Machine	30	25	Variable	Variable	100	▶ C.S ▶ S.S	
Pressure Vessel	30	60	3500	20000	300	▶ C.S ▶ S.S	
Heat Exchanger	30	35	3000	12000	150	▶ ALLOY	
Tower & Column	45	25	3700	30000	100	▶ CLAD	

 SEST	PREQUALIFICATION SUMMARY	DOC. NO.	PQ - F - MV-001
		SECTION	4.0
	4.0 LICENSE AND PERMIT	DATE	Jun.17, 2015
		PAGE	1 OF 1

4.1 LICENSE AND PERMIT

LICENSE AND PERMIT	PERMIT NO.	VALIDITY	REMARKS
MANUFACTURING PERMIT OF PRESSURE VESSEL AND FIBER MACHINERY	KAMI 02-104-2001	DEC. 4, 1985 ~	KOREA ASSOCIATION OF MACHINERY INDUSTRY
TECHNICAL COOPERATION AGREEMENT OF FILTER PRESS	NORITAKE	FEB. 15, 1987 ~	NORITAKE IRON CO.
MANUFACTURING PERMIT OF THERMAL EQUIPMENT	6	NOV. 16, 1995 ~	THE LAW OF ENERGY RATIONALIZATION
CERTIFICATE OF TRADE BUSINESS	KITA 12044739	NOV. 10, 1999 ~	KOREA INTERNATIONAL TRADE ASSOCIATION
MANUFACTURING PERMIT OF FILTER PRESS	LG ENG'G D00313	FEB. 4, 1998 ~	LG ENGINEERING CO.,LTD.
REGISTERED MANUFACTURER OF ENVIRONMENTAL AND CHEMICAL EQUIPMENTS	SUNGJO	FEB. 28, 1998 ~	SAMSUNG ENGINEERING CO.,LTD.
MANUFACTURING PERMIT OF FILTER PRESS	POSEC B	NOV. 1, 1998 ~ JUN. 30, 2000	POSCO ENGINEERING & CONSTRUCTION CO.,LTD.
ISO 9001 CERTIFICATION FOR DESIGN, MANUFACTURING & SERVICING OF FILTER PRESS PACKAGES, PRESSURE VESSEL AND HEAT EXCHANGERS	136189	DEC. 02, 2000 ~	BUREAU VERITAS QUALITY INTERNATIONAL (BVQI/UKAS)
PRODUCT OF HIGH PRESSURE GAS FACILITIS, GAS STORAGE TANK AND CRYOGENIC TANK	143401	JUL. 31, 2003 ~	KOREA GAS SAFETY CORPORATION

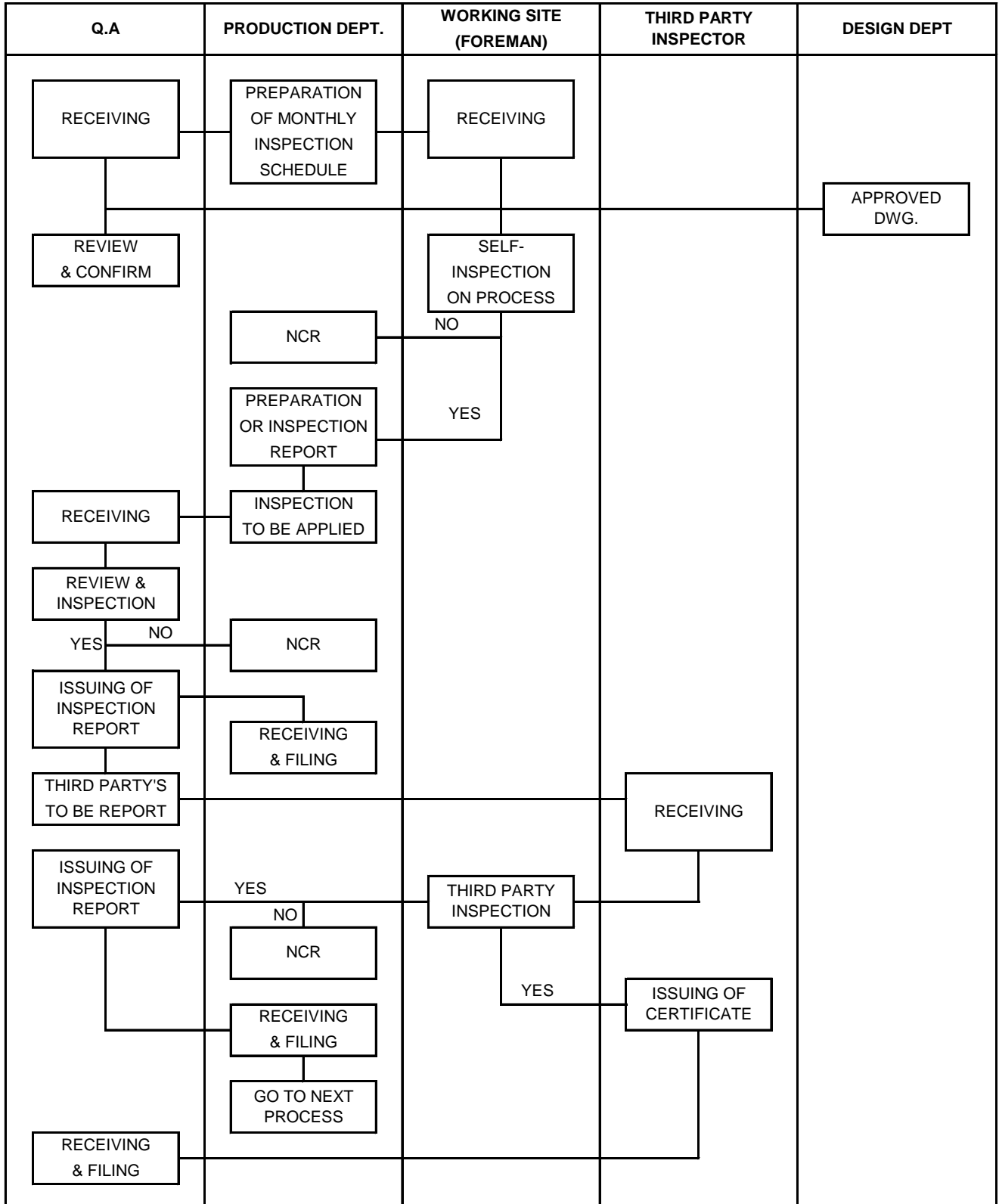


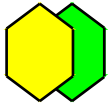
PREQUALIFICATION SUMMARY

5.0 QUALITY CONTROL PROCESS

DOC. NO.	PQ - F - MV-001
SECTION	5.0
DATE	Jun.17, 2015
PAGE	1 OF 2

5.1 QUALITY ASSURANCE ACTIVITY PROCESS





SEST

PREQUALIFICATION SUMMARY

5.0 QUALITY CONTROL PROCESS

DOC. NO.

PQ - F - MV-001

SECTION

5.0

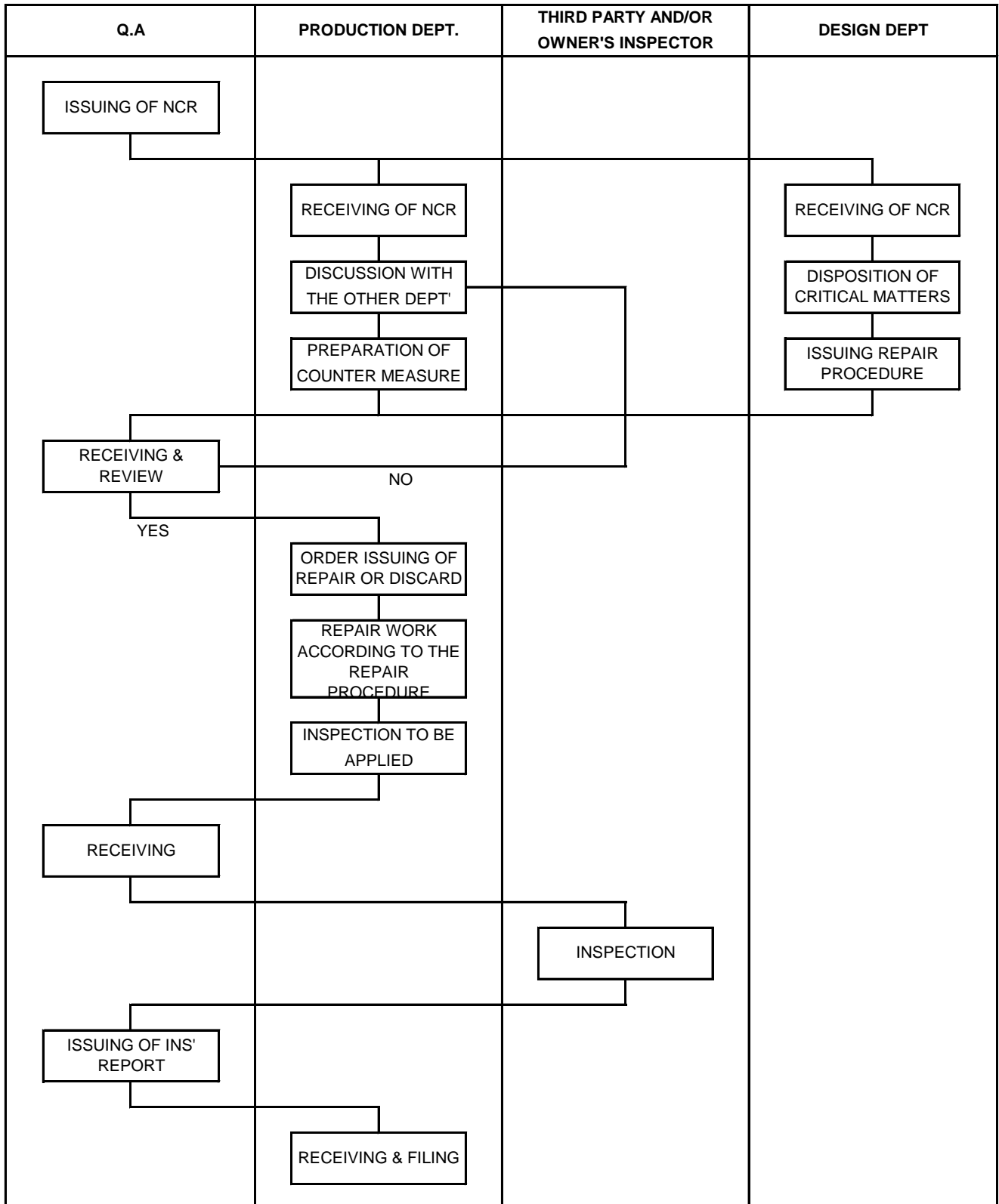
DATE

Jun.17, 2015

PAGE

2 OF 2

5.1 NCR TREATMENT FLOW



 SEST	PREQUALIFICATION SUMMARY	DOC. NO.	PQ - F - MV-001
		SECTION	6.0
	6.0 PERFORMANCE RECORDS	DATE	Jun.17, 2015
		PAGE	1 OF 16

6.1 FILTER PRESS

NO	CUSTOMER	AREA	Q'TY	SPECIFICATION				YEAR	REMARK
				TYPE	F. PLATE	SIZE	CH.		
1	KUKDONG OIL & CHEMICAL CO.,LTD.	BUSAN	3	SEMI-AUTO	RECESS	□ 800	40	1981	
2	SONGWON COLOR CO.,LTD.	BUSAN	3	FULL-AUTO	RECESS	□1000	64	1986	
3	MICHANG OIL IND. CO.,LTD.	BUSAN	3	SEMI-AUTO	RECESS	□ 800	30	1986	
4	SONGWON COLOR CO.,LTD.	BUSAN	3	FULL-AUTO	M.P. MEM'	□1200	40	1987	
5	KYUNGKEE COLOR CO.,LTD.	BUSAN	2	AUTOMATIC	RECESS	□1000	60	1987	
6	SONGWON COLOR CO.,LTD.	BUSAN	1	FULL-AUTO	RECESS	□1500	52	1988	
7	SONGWON COLOR CO.,LTD.	BUSAN	1	MANUAL	MEMBRANE	□1000	50	1989	
8	M.S.C	YANGSAN	1	FULL-AUTO	RECESS	□1000	60	1989	
9	KYUNGKEE CHEMICAL CO.,LTD.	SUWON	1	FULL-AUTO	RECESS	□1200	75	1989	
10	DONGYANG CHEMICAL CO.,LTD.	BUSAN	1	AUTOMATIC	MEMBRANE	□1000	30	1990	
11	M.S.C	YANGSAN	1	FULL-AUTO	MEMBRANE	□1500	60	1990	
12	MICHANG OIL IND. CO.,LTD.	ULSAN	1	SEMI-AUTO	RECESS	□ 800	30	1990	
13	YONGSAN CHEMICAL CO.,LTD.	ULSAN	1	FULL-AUTO	RECESS	□ 630	25	1990	
14	YONGSAN CHEMICAL CO.,LTD.	ULSAN	1	SEMI-AUTO	RECESS	□ 630	19	1990	
15	YONGSAN CHEMICAL CO.,LTD.	ULSAN	2	PILOT	RECESS	□ 470	6	1990	
16	KYUNGKEE COLOR CO.,LTD.	BUSAN	2	AUTOMATIC	RECESS	□1000	60	1990	
17	SONGWON COLOR CO.,LTD.	BUSAN	1	AUTOMATIC	RECESS	□1000	58	1990	
18	SONGWON COLOR CO.,LTD.	BUSAN	1	AUTOMATIC	RECESS	□1000	50	1990	
19	SONGWON COLOR CO.,LTD.	BUSAN	1	AUTOMATIC	RECESS	□1000	56	1990	
20	SAMBO FINE CHEMICAL MFG.	BUSAN	1	MANUAL	RECESS	□800	40	1990	
21	TAIHEUNG CORPORATION	GUNPO	3	AUTOMATIC	M.P. MEM'	□1000	52	1990	
22	TAIHEUNG CORPORATION	GUNPO	1	AUTOMATIC	MEMBRANE	□ 800	30	1990	

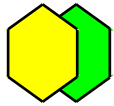


PREQUALIFICATION SUMMARY

DOC. NO.	PQ - F - MV-001
SECTION	6.0
DATE	Jun.17, 2015
PAGE	2 OF 16

6.0 PERFORMANCE RECORDS

NO	CUSTOMER	AREA	Q'TY	SPECIFICATION				YEAR	REMARK
				TYPE	F. PLATE	SIZE	CH.		
23	TAIHEUNG CORPORATION	GUNPO	2	AUTOMATIC	M.P. MEM'	□ 630	24	1991	
24	DONGYANG CHEMICAL CO.,LTD.	BUSAN	1	AUTOMATIC	RECESS	□1000	30	1991	
25	SONGWON COLOR CO.,LTD.	BUSAN	2	AUTOMATIC	MEMBRANE	□1000	68	1991	
26	SONGWON COLOR CO.,LTD.	BUSAN	1	AUTOMATIC	MEMBRANE	□1000	64	1992	
27	TAIHEUNG CORPORATION	GUNPO	1	MANUAL	MEMBRANE	□ 630	40	1992	
28	BOKWANG CORPORATION	ULSAN	1	FULL-AUTO	RECESS	□1000	60	1992	
29	BOKWANG CORPORATION	ULSAN	2	AUTOMATIC	M.P. MEM'	□1000	54	1992	
30	TAIHEUNG CORPORATION	GUNPO	1	AUTOMATIC	RECESS	□ 930	50	1992	
31	M.S.C	YANGSAN	1	FULL-AUTO	RECESS	□1000	60	1992	
32	OYOUNG IND. CO.,LTD.	SIHWA	1	SEMI-AUTO	RECESS	□1000	40	1993	
33	SONGWON COLOR CO.,LTD.	BUSAN	1	AUTOMATIC	M.P. MEM'	□1200	60	1993	
34	JANGWOO CHEMICAL CO.,LTD.	YANGSAN	1	MANUAL	RECESS	□ 800	30	1993	
35	SONGWON COLOR CO.,LTD.	BUSAN	1	AUTOMATIC	M.P. MEM'	□1200	60	1993	
36	M.S.C	YANGSAN	1	FULL-AUTO	M.P. MEM'	□1500	80	1993	
37	OYOUNG IND. CO.,LTD.	SIHWA	4	MANUAL	RECESS	□1200	54	1993	
38	TAIHEUNG CORPORATION	GUNPO	1	SEMI-AUTO	RECESS	□ 930	60	1993	
39	DONGYANG CHEMICAL CO.,LTD.	BUSAN	1	FULL-AUTO	RECESS	□1000	30	1994	
40	LG NIKKO 동제련	ONSAN	1	SEMI-AUTO	RECESS	□1000	50	1994	
41	YUKONG OXICHEMICAL CO.,LTD.	ULSAN	1	SEMI-AUTO	RECESS	□1000	41	1994	SK ENG'G & CONS'
42	BOKWANG CORPORATION	ULSAN	1	SEMI-AUTO	M.P. MEM'	□1200	50	1994	
43	CHEIL FOODS & CHEMICAL CO.,LTD.	SEOUL	1	SEMI-AUTO	RECESS	□1000	24	1994	
44	SONGWON COLOR CO.,LTD.	BUSAN	3	FULL-AUTO	M.P. MEM'	□1200	60	1994	



SEST

PREQUALIFICATION SUMMARY

DOC. NO.

PQ - F - MV-001

SECTION

6.0

DATE

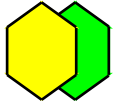
Jun.17, 2015

PAGE

3 OF 16

6.0 PERFORMANCE RECORDS

NO	CUSTOMER	AREA	Q'TY	SPECIFICATION				YEAR	REMARK
				TYPE	F. PLATE	SIZE	CH.		
45	SONGWON COLOR CO.,LTD.	YANGSAN	8	AUTOMATIC	M.P. MEM'	□1200	40	1994	
46	BOKWANG CORPORATION	ULSAN	1	AUTOMATIC	M.P. MEM'	□1200	50	1994	
47	EYANG CHEMICAL CO.,LTD.	ULSAN	1	FULL-AUTO	RECESS	□1000	42	1994	
48	OYOUNG IND. CO.,LTD.	SIHWA	4	SEMI-AUTO	M.P. MEM'	□1000	50	1994	
49	BOKWANG CORPORATION	ULSAN	1	PILOT	MEMBRANE	□ 470	4	1994	
50	SEKWANG INDUSTRIAL CO.,LTD.	ULSAN	1	PILOT	RECESS	□ 470	18	1994	
51	POSCO / STS	POHANG	1	FULL-AUTO	RECESS	□ 800	55	1995	DAEJO ENG'G
52	ILCHIL CHEMICAL CO.,LTD.	YOCHON	1	SEMI-AUTO	RECESS	□1000	18	1995	
53	DONGSUNG CHEMICAL CO.,LTD.	ULSAN	1	SEMI-AUTO	RECESS	□1000	23	1995	SHINWHA ENG'G
54	TS CORPORATION	INCHON	1	FULL-AUTO	RECESS	□1000	40	1995	
55	JINRO COORS BREWING	DAEJEON	1	FULL-AUTO	M.P. MEM'	□1000	28	1995	SAMSUNG ENG'G
56	SAMSUNG ELECTRO-MECHANICS CO.,LTD.	SUWON	1	FULL-AUTO	RECESS	□1000	55	1995	SAMSUNG ENG'G
57	LG CHEMICAL CO.,LTD.	YOCHON	2	FULL-AUTO	M.P. MEM'	□1000	48	1995	SAEHAN ENG'G
58	LG NIKKO 동제련	ONSAN	2	SEMI-AUTO	RECESS	□1200	36	1995	
59	LG NIKKO 동제련	ONSAN	1	FULL-AUTO	M.P. MEM'	□1200	26	1995	
60	LG NIKKO 동제련	ONSAN	1	FULL-AUTO	M.P. MEM'	□1200	20	1995	
61	DONGSUNG CHEMICAL CO.,LTD.	ULSAN	1	PILOT	MEMBRANE	□ 470	4	1995	
62	BOKWANG CORPORATION	ULSAN	1	SEMI-AUTO	RECESS	□ 630	30	1995	
63	SONGWON COLOR CO.,LTD.	ONSAN	1	PILOT	RECESS	□ 250	4	1995	
64	M.S.C	YANGSAN	1	FULL-AUTO	RECESS	□1200	60	1995	
65	SAMSUNG ELECTRO-MECHANICS CO.,LTD.	JOCHI WON	1	FULL-AUTO	M.P. MEM'	□1200	64	1995	SAMSUNG ENG'G
66	TAIHEUNG CORPORATION	GUNPO	2	MANUAL	MEMBRANE	□ 630	40	1995	



SEST

PREQUALIFICATION SUMMARY

DOC. NO.

PQ - F - MV-001

SECTION

6.0

DATE

Jun.17, 2015

PAGE

4 OF 16

6.0 PERFORMANCE RECORDS

NO	CUSTOMER	AREA	Q'TY	SPECIFICATION				YEAR	REMARK
				TYPE	F. PLATE	SIZE	CH.		
67	POSCO / K4C	KWANG YANG	3	FULL-AUTO	RECESS	□1500	52	1996	POSCO E & C
68	M.S.C	YANGSAN	1	FULL-AUTO	RECESS	□1000	120	1996	
69	YONSEI UNIVERSITY / BIO	SEOUL	1	FULL-AUTO	M.P. MEM'	□1000	30	1996	WOOJOO ENVIRO
70	KOREA POLYOL CO.,LTD.	ULSAN	1	SEMI-AUTO	RECESS	□1000	26	1996	
71	SAMSUNG ELECTRO-MECHANICS CO.,LTD.	SUWON	1	FULL-AUTO	M.P. MEM'	□1000	30	1996	SAMSUNG ENG'G
72	HWIWOO IND. CO.LTD.	KUNPO	1	SEMI-AUTO	MEMBRANE	□1200	36	1996	
73	POSCO REFRACTORIES CO.	POHANG	1	FULL-AUTO	M.P. MEM'	□1500	60	1996	
74	YOUNGPOONG CORP. (SUKPO ZINC REFINERY)	SUKPO	9	SEMI-AUTO	RECESS	□1200	55	1996	
75	TS CORPORATION	ULSAN	1	FULL-AUTO	M.P. MEM'	□1000	40	1996	
76	SAEHAN CONCRETE IND. CO.,LTD.	CHUNGJU	1	FULL-AUTO	RECESS	□1200	100	1996	
77	SONGWON COLOR CO.,LTD.	ONSAN	1	AUTOMATIC	M.P. MEM'	□1200	60	1996	
78	LG NIKKO 동제련	ONSAN	1	FULL-AUTO	M.P. MEM'	□1200	48	1996	
79	HANKOOK TITANIUM IND. CO.,LTD.	INCHON	1	FULL-AUTO	M.P. MEM'	□1300	66	1996	
80	DONGKUK STEEL MILL CO.	POHANG	2	FULL-AUTO	RECESS	□1000	32	1996	BOMYUNG PLANT
81	LG CHEMICAL CO.,LTD.	ONSAN	1	SEMI-AUTO	P+FRAME	□ 600	32	1996	
82	HANKOOK TITANIUM IND. CO.,LTD.	ONSAN	3	FULL-AUTO	M.P. MEM'	□1500	60	1996	SAMSUNG ENG'G
83	HANKOOK TITANIUM IND. CO.,LTD.	ONSAN	2	FULL-AUTO	M.P. MEM'	□1500	30	1996	SAMSUNG ENG'G
84	POONGSAN PRECISION CORPERATION	BUSAN	1	SEMI-AUTO	RECESS	□ 800	32	1996	
85	SAMSUNG AEROSPACE	SACHON	2	FULL-AUTO	M.P. MEM'	□1000	34	1996	SAMSUNG ENG'G
86	LG SILTRON INC.	ICHON	1	FULL-AUTO	RECESS	□ 800	38	1996	
87	LG NIKKO 동제련	ONSAN	2	MANUAL	P+FRAME	□ 470	8	1996	
88	KYUNGKEE CHEMICAL CO.,LTD.	BUCHON	1	PILOT	MEMBRANE	□ 250	4	1996	



PREQUALIFICATION SUMMARY

DOC. NO.	PQ - F - MV-001
SECTION	6.0
DATE	Jun.17, 2015
PAGE	5 OF 16

6.0 PERFORMANCE RECORDS

NO	CUSTOMER	AREA	Q'TY	SPECIFICATION				YEAR	REMARK
				TYPE	F. PLATE	SIZE	CH.		
89	OYOUNG IND. CO.,LTD.	MUNSAN	1	SEMI-AUTO	MEMBRANE	□1000	46	1996	
90	HANKOOK TITANIUM IND. CO.,LTD.	ONSAN	5	FULL-AUTO	M.P. MEM'	□1500	80	1996	SAMSUNG ENG'G
91	HANKOOK TITANIUM IND. CO.,LTD.	ONSAN	2	FULL-AUTO	M.P. MEM'	□1500	72	1996	SAMSUNG ENG'G
92	LG NIKKO 동제련	ONSAN	1	FULL-AUTO	M.P. MEM'	□1200	58	1997	LG ENG'G
93	LG NIKKO 동제련	ONSAN	1	FULL-AUTO	M.P. MEM'	□1000	40	1997	LG ENG'G
94	DONGYANG M.K CO.,LTD.	ASAN	1	FULL-AUTO	RECESS	□1200	40	1997	SSANGYON G ENG'G
95	LG NIKKO 동제련	ONSAN	1	FULL-AUTO	M.P. MEM'	□1500	46	1997	LG ENG'G
96	LG NIKKO 동제련	ONSAN	2	FULL-AUTO	M.P. MEM'	□ 800	26	1997	LG ENG'G
97	DAIHAN EUNPAKGY CO.,LTD.	SEOUL	1	SEMI-AUTO	RECESS	□ 800	24	1997	
98	UKSEUNG CHEMICAL CO.,LTD.	PUSAN	1	AUTOMATIC	M.P. MEM'	□1200	28	1997	
99	POONGSAN PRECISION CORPERATION, PHILIPPINE	PHILIPPINE	1	SEMI-AUTO	RECESS	□ 630	26	1997	BUMYANG WATER T.
100	KOREA MIDLAND POWER CO.,LTD.	PORYUNG	1	FULL-AUTO	M.P. MEM'	□1500	48	1997	SAMYANG W & S IND.
101	SAMSUNG FINE CHEMICALS CO.,LTD.	ULSAN	1	FULL-AUTO	M.P. MEM'	□1000	38	1997	SAMSUNG ENG'G
102	OYOUNG IND. CO.,LTD.	MUNSAN	1	SEMI-AUTO	M.P. MEM'	□1200	50	1997	
103	OYOUNG IND. CO.,LTD.	MUNSAN	1	SEMI-AUTO	M.P. MEM'	□1000	40	1997	
104	SAMSUNG FINE CHEMICALS CO.,LTD.	ULSAN	1	FULL-AUTO	M.P. MEM'	□1500	42	1997	SAMSUNG ENG'G
105	SAMSUNG SDI CO.,LTD.	CHONAN	1	FULL-AUTO	M.P. MEM'	□1000	52	1997	SAMSUNG ENG'G
106	SAMSUNG ELECTRONICS CO.,LTD.	CHONAN	1	FULL-AUTO	M.P. MEM'	□1500	64	1997	SAMSUNG ENG'G
107	HANKOOK TITANIUM IND. CO.,LTD.	YONGIN	1	SEMI-AUTO	RECESS	□1000	40	1997	CHOYANG MACHINERY
108	NAMYANG ENERGY CO.	KIMHEA	1	MAMUAL	P+FRAME	□ 630	22	1998	
109	KOREA HYEOPHWA CHEMICAL IND. CO.,LTD.	ONSAN	1	FULL-AUTO	M.P. MEM'	□ 630	36	1998	
110	SAMSUNG SDI CO.,LTD.	CHONAN	1	SEMI-AUTO	RECESS	□ 630	6	1998	KWANG-IL PLANT



PREQUALIFICATION SUMMARY

DOC. NO.	PQ - F - MV-001
SECTION	6.0
DATE	Jun.17, 2015
PAGE	6 OF 16

6.0 PERFORMANCE RECORDS

NO	CUSTOMER	AREA	Q'TY	SPECIFICATION				YEAR	REMARK
				TYPE	F. PLATE	SIZE	CH.		
111	SAMSUNG CORNING CO.,LTD.	SUWON	2	FULL-AUTO	M.P. MEM'	□1200	30	1998	SAMSUNG ENG'G
112	YOUNGPOONG CORP. (SUKPO ZINC REFINERY)	SUKPO	3	SEMI-AUTO	RECESS	□1500	56	1998	
113	JOONGIL MATALS INC.	ANSAN	1	SEMI-AUTO	RECESS	□1000	36	1998	
114	POSCO / TINPLATE	POHANG	1	FULL-AUTO	MEMBRANE	□1000	24	1998	
115	YOUNGPOONG CORP. (SUKPO ZINC REFINERY)	SUKPO	3	SEMI-AUTO	RECESS	□1500	66	1998	
116	KOLON CHEMICAL CO.LTD.	ONSAN	1	AUTOMATIC	RECESS	□1200	48	1998	
117	DONGDUCHON DYEING	DONGDU- CHON	2	FULL-AUTO	M.P. MEM'	□1200	80	1999	SAMSUNG ENG'G
118	SONGWON COLOR CO.,LTD.	ONSAN	1	AUTOMATIC	M.P. MEM'	□1200	64	1999	
119	UKSEUNG CHEMICAL CO.,LTD.	BUSAN	5	AUTOMATIC	M.P. MEM'	□1200	54	1999	
120	KUWAIT CATALYST COMPANY	KUWAIT	1	FULL-AUTO	M.P. MEM'	□800	22	1999	HYUNDAI ENG'G
121	KOREA POLYOL CO.,LTD.	ULSAN	2	SEMI-AUTO	RECESS	□650	21	1999	
122	BOKWANG CORPORATION	ULSAN	1	SEMI-AUTO	RECESS	□630	20	1999	
123	KODO CHEMICAL CO.,LTD.	POHANG	1	MANUAL	RECESS	□800	20	1999	
124	POCOS / CGL	POHANG	1	SEMI-AUTO	RECESS	□1000	30	1999	SAEHAN
125	NANO CO.,LTD.	JINJU	1	MANUAL	RECESS	□800	12	1999	
126	HYNIX SEMICONDUCTOR INC.	ICHON	1	AUTOMATIC	RECESS	□1000	42	1999	HANSU TECH.
127	SAMSUNG ELECTRO- MECHANICS CO.,LTD.	BUSAN	2	FULL-AUTO	M.P. MEM'	□1200	68	1999	SAMSUNG ENG'G
128	KOREA HYEOPHWA CHEMICAL IND. CO.,LTD.	ONSAN	2	FULL-AUTO	M.P. MEM'	□1500	64	1999	
129	KOREA HYEOPHWA CHEMICAL IND. CO.,LTD.	ONSAN	1	FULL-AUTO	M.P. MEM'	□630	36	1999	
130	KOREA HYEOPHWA CHEMICAL IND. CO.,LTD.	ONSAN	1	SEMI-AUTO	RECESS	□800	18	1999	
131	M.S.C	YANGSAN	1	FULL-AUTO	RECESS	□1500	50	2000	
132	YOUNGPOONG CORP. (SUKPO ZINC REFINERY)	SUKPO	5	SEMI-AUTO	RECESS	□1500	66	2000	

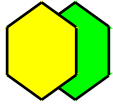


PREQUALIFICATION SUMMARY

DOC. NO.	PQ - F - MV-001
SECTION	6.0
DATE	Jun.17, 2015
PAGE	7 OF 16

6.0 PERFORMANCE RECORDS

NO	CUSTOMER	AREA	Q'TY	SPECIFICATION				YEAR	REMARK
				TYPE	F. PLATE	SIZE	CH.		
133	UKSEUNG CHEMICAL CO.,LTD.	BUSAN	2	AUTOMATIC	RECESS	□1200	70	2000	
134	OYOUNG IND. CO.,LTD.	SIHWA	2	SEMI-AUTO	RECESS	□1000	30	2000	
135	DONGBU ELECTRONICS CO.,LTD.	EUMSUNG	1	FULL-AUTO	M.P. MEM'	□1200	50	2000	LG ENG'G
136	NANO CO.,LTD.	JINJU	3	FULL-AUTO	M.P. MEM'	□1000	20	2000	
137	HANWHA CORPORATION	ULSAN	1	MANUAL	P+FRAME	□610	18	2000	
138	NOKSAN DYEING	BUSAN	2	FULL-AUTO	M.P. MEM'	□1200	60	2000	LG ENG'G
139	SAMSUNG FINE CHEMICALS CO.,LTD.	ULSAN	1	FULL-AUTO	RECESS	□1000	44	2000	
140	HANKUK ELECTRIC GLASS CO.	KUMI	2	FULL-AUTO	M.P. MEM'	□1200	88	2000	
141	SEUNG NAE SA CO., LTD.	KUMI	1	SEMI-AUTO	RECESS	□1000	40	2000	
142	KOREA WATER RESOURCES CORPORATION	ULSAN	3	FULL-AUTO	M.P. MEM'	□1500	100	2000	SAMSUNG ENG'G
143	LG NIKKO 동제련	ONSAN	1	FULL-AUTO	M.P. MEM'	□1200	40	2000	LG ENG'G
144	SAMYEONG PLANT CO.,LTD.	KWANGJU	1	AUTOMATIC	M.P. MEM'	□1300	120	2001	
145	SAMSUNG ELECTRO-MECHANICS CO.,LTD.	BUSAN	1	SEMI-AUTO	RECESS	□630	28	2001	
146	SAMYEONG PLANT CO.,LTD.	SEOUL	1	AUTOMATIC	M.P. MEM'	□1500	86	2001	
147	SAMYEONG PLANT CO.,LTD.	SEOUL	1	AUTOMATIC	M.P. MEM'	□1500	100	2001	
148	POSCO / #2 STEEL	POHANG	2	FULL-AUTO	M.P. MEM'	□1200	38	2001	KOLON ENG'G
149	POSCO / #2 STEEL	POHANG	1	FULL-AUTO	M.P. MEM'	□1200	30	2001	KOLON ENG'G
150	BAKKWANG CO.,LTD.	DANYANG	1	FULL-AUTO	MEMBRANE	□1000	24	2001	
151	GHANA TEMA OIL REFINERY LTD.	GHANA	1	AUTOMATIC	RECESS	□1000	36	2001	SK ENG'G & CONS'
152	SAMYEONG PLANT CO.,LTD.	GOYANG	1	AUTOMATIC	M.P. MEM'	□1500	82	2001	
153	OYOUNG IND. CO.,LTD.	CIWHA	2	MANUAL	P+FRAME	□630	40	2001	
154	COSMO CO., LTD	CHUNGJU	2	SEMI-AUTO	RECESS	□1000	35	2001	



SEST

PREQUALIFICATION SUMMARY

DOC. NO.

PQ - F - MV-001

SECTION

6.0

DATE

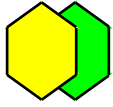
Jun.17, 2015

PAGE

8 OF 16

6.0 PERFORMANCE RECORDS

NO	CUSTOMER	AREA	Q'TY	SPECIFICATION				YEAR	REMARK
				TYPE	F. PLATE	SIZE	CH.		
155	POSCO / STS #3 APL	POHANG	2	FULL-AUTO	M.P. MEM'	□1200	48	2001	POSCO E & C
156	BAKKWANG CO.,LTD.	DANYANG	1	AUTOMATIC	M.P. MEM'	□630	22	2001	
157	DONGBOO STEEL CO.,LTD.	DANGJIN	1	AUTOMATIC	M.P. MEM'	□1200	30	2001	
158	SEUNG NAE SA CO., LTD.	KUMI	1	SEMI-AUTO	RECESS	□1200	70	2002	
159	HANKUK ELECTRIC GLASS CO.	KUMI	2	FULL-AUTO	M.P. MEM'	□1200	80	2002	
160	SAMSUNG ELECTRONICS CO.,LTD.	CHONAN	1	FULL-AUTO	M.P. MEM'	□1500	80	2002	SAMSUNG ENG'G
161	GUMJUN DYEING	YANGJU	3	FULL-AUTO	M.P. MEM'	□1500	60	2002	SAMSUNG ENG'G
162	BAKKWANG CO.,LTD.	DANYANG	1	FULL-AUTO	MEMBRANE	□1500	110	2002	
163	SAMYEONG PLANT CO.,LTD.	OKSAN	2	AUTOMATIC	M.P. MEM'	□1500	86	2002	
164	UKSEUNG CHEMICAL CO.,LTD.	PUSAN	1	SEMI-AUTO	M.P. MEM'	□1200	72	2002	
165	ZPSS / POSCO, CHINA	CHINA	2	AUTOMATIC	M.P. MEM'	□1200	50	2002	ZPSS
166	ZPSS / POSCO, CHINA	CHINA	1	AUTOMATIC	RECESS	□1000	50	2002	POSCO E & C
167	TS CORPORATION	INCHON	1	FULL-AUTO	RECESS	□1000	40	2002	
168	DONGBOO STEEL CO.,LTD.	INCHON	1	FULL-AUTO	MEMBRANE	□1000	24	2002	
169	POCOS / SAMKWANG	POHANG	1	SEMI-AUTO	RECESS	□1500	70	2002	POSCO E & C
170	DONG-A STEEL / HEASUNG	POHANG	1	SEMI-AUTO	RECESS	□800	20	2002	
171	SAMYEONG PLANT CO.,LTD.	SEOUL	1	AUTOMATIC	M.P. MEM'	□1500	70	2002	
172	CALTECH CO., LTD.	DANYANG	1	SEMI-AUTO	RECESS	□800	28	2002	
173	KOREA POLYOL	DAESAN	2	SEMI-AUTO	RECESS	□550	24	2002	
174	UKSEUNG CHEMICAL CO.,LTD.	PUSAN	2	SEMI-AUTO	M.P. MEM'	□1500	76	2003	
175	SAMSUNG ELECTRO-MECHANICS CO.,LTD.	PUSAN	1	FULL-AUTO	M.P. MEM'	□1200	68	2003	SAMSUNG ENG'G
176	SAMYEONG PLANT CO.,LTD.	GURI	1	AUTOMATIC	MEMBRANE	□1500	100	2003	



SEST

PREQUALIFICATION SUMMARY

DOC. NO.

PQ - F - MV-001

SECTION

6.0

6.0 PERFORMANCE RECORDS

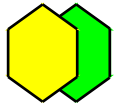
DATE

Jun.17, 2015

PAGE

9 OF 16

NO	CUSTOMER	AREA	Q'TY	SPECIFICATION				YEAR	REMARK
				TYPE	F. PLATE	SIZE	CH.		
177	SAMSUNG ELECTRONICS CO.,LTD.	CHONAN	1	FULL-AUTO	M.P. MEM'	□1500	80	2003	SAMSUNG ENG'G
178	SAMSUNG ELECTRONICS CO.,LTD.	CHONAN	1	FULL-AUTO	M.P. MEM'	□1500	64	2003	SAMSUNG ENG'G
179	UKSEUNG CHEMICAL CO.,LTD.	BUSAN	1	SEMI-AUTO	RECESS	□1200	72	2003	
180	KOREA SOUTH-EAST POWER CO.,LTD.	SAMCHUN PO	1	FULL-AUTO	M.P. MEM'	□1200	50	2003	SAMYANG W & S IND.
181	KUKDO CHEMICAL CO.,LTD.	CHINA	1	SEMI-AUTO	RECESS	□1000	23	2003	
182	KUKDO CHEMICAL CO.,LTD.	CHINA	1	MANUAL	RECESS	□470	4	2003	
183	YOUNGPOONG CORP. (SUKPO ZINC REFINERY)	SUKPO	1	SEMI-AUTO	RECESS	□1500	66	2003	
184	HANWHA CORPORATION	ULSAN	1	MANUAL	P+FRAME	□630	24	2003	
185	POHANG RIST	POHANG	1	MANUAL	RECESS	□630	4	2003	
186	HANKUK ELECTRIC GLASS CO.	CHINA	2	FULL-AUTO	M.P. MEM'	□1200	88	2003	
187	SAMYEONG PLANT CO.,LTD.	IL SAN	1	AUTOMATIC	MEMBRANE	□1500	96	2003	
188	QPSS / POSCO, CHINA	CHINA	2	AUTOMATIC	M.P. MEM'	□1200	50	2003	POSCO E & C
189	QPSS / POSCO, CHINA	CHINA	1	AUTOMATIC	M.P. MEM'	□1000	20	2003	POSCO E & C
190	QPSS / POSCO, CHINA	CHINA	1	AUTOMATIC	RECESS	□1000	40	2003	POSCO E & C
191	LG NIKKO 동제련	ONSAN	1	SEMI-AUTO	M.P. MEM'	□630	24	2003	
192	M.S.C	YANGSAN	1	FULL-AUTO	M.P. MEM'	□1500	60	2003	
193	BOKWANG	ULSAN	2	AUTOMATIC	M.P. MEM'	□1200	52	2004	
194	SAMSUNG ELECTRONICS CO.,LTD.	TANG JUNG	2	FULL-AUTO	M.P. MEM'	□1500	100	2004	SAMSUNG ENG'G
195	YOUNGPOONG CORP. (SUKPO ZINC REFINERY)	SUKPO	2	SEMI-AUTO	RECESS	□1500	66	2004	
196	POSCO/ NAPL	POHANG	1	FULL-AUTO	M.P. MEM'	□630	26	2004	POSCO E & C
197	YOUNGPOONG CORP. (SUKPO ZINC REFINERY)	SUKPO	2	AUTOMATIC	M.P. MEM'	□1500	70	2004	
198	INA FOOD INDUSTRY CO.,LTD	JAPAN	1	FULL-AUTO	M.P. MEM'	□1000	56	2004	SEITARO ARAI&CO.LTD



SEST

PREQUALIFICATION SUMMARY

DOC. NO.

PQ - F - MV-001

SECTION

6.0

6.0 PERFORMANCE RECORDS

DATE

Jun.17, 2015

PAGE

10 OF 16

NO	CUSTOMER	AREA	Q'TY	SPECIFICATION				YEAR	REMARK
				TYPE	F. PLATE	SIZE	CH.		
199	L.G NIKKO COPPER	ULSAN	1	FULL-AUTO	M.P. MEM'	□1200	36	2004	
200	DONGBU ELECTRONICS	EUM SEONG	1	FULL-AUTO	M.P. MEM'	□800	24	2004	
201	SAMYEONG PLANT CO.,LTD.	NAMYANG JU	1	SEMI-AUTO	MEMBRANE	□1500	60	2004	
202	KT & G	WONJU	1	FULL-AUTO	M.P. MEM'	□800	30	2004	
203	LG-NIKKO	ONSAN	1	FULL-AUTO	M.P. MEM'	□1200	50	2004	
204	SAMSUNG ELECTRONICS CO.,LTD.	CHONAN	1	FULL-AUTO	M.P. MEM'	□1500	84	2004	SAMSUNG ENG'G
205	POSCO / NO.6 CGL	KWANG-YANG	2	FULL-AUTO	M.P. MEM'	□1500	54	2004	SAMKWANG
206	LG-PHILIPS CO.,LTD.	PAJU	2	SEMI-AUTO	M.P. MEM'	□1500	90	2004	
207	SAMSUNG SDI CO.,LTD.	ULSAN	2	FULL-AUTO	M.P. MEM'	□1500	64	2005	SAMSUNG ENG'G
208	SAMYEONG PLANT CO.,LTD.	ILSAN	2	SEMI-AUTO	M.P. MEM'	□1500	100	2005	SHINSUNG
209	SAMSUNG TECHWIN CO.,LTD.	CHANG WON	1	FULL-AUTO	M.P. MEM'	□1200	68	2005	SAMSUNG ENG'G
210	ZPSS / POSCO, CHINA	CHINA	3	FULL-AUTO	M.P. MEM'	□1200	48	2005	ZPSS
211	SAMSUNG ELECTRONICS CO.,LTD.	TANG JUNG	1	FULL-AUTO	M.P. MEM'	□1500	100	2005	SAMSUNG ENG'G
212	SAMYEONG PLANT CO.,LTD.	ANYANG	1	SEMI-AUTO	M.P. MEM'	□1500	80	2005	JEIL
213	SAMYEONG PLANT CO.,LTD.	YONGIN	1	SEMI-AUTO	M.P. MEM'	□1500	100	2005	DONGWON
214	SAMYEONG PLANT CO.,LTD.	ILSAN	1	SEMI-AUTO	M.P. MEM'	□1500	100	2005	INSUN ENT
215	SAMYEONG PLANT CO.,LTD.	POCHEON	1	SEMI-AUTO	M.P. MEM'	□1500	100	2005	
216	BUSAN WATER AUTHORITY	BUSAN	1	FULL-AUTO	M.P. MEM'	□1200	94	2005	DUKSAN TREATMENT CENTER
217	WONJIN HEAVY INDUSTRY CO.	BUSAN	5	SEMI-AUTO	RECESS	□1000	50	2005	
218	WONJIN HEAVY INDUSTRY CO.	BUSAN	3	SEMI-AUTO	P+FRAME	□1000	50	2005	
219	ENF TECH	ULSAN	1	MANUAL	RECESS	□470	6	2005	
220	SAMSUNG ELECTRONICS CO.,LTD.	TANG JUNG	1	FULL-AUTO	M.P. MEM'	□1500	100	2005	SAMSUNG ENG'G



PREQUALIFICATION SUMMARY

DOC. NO.

PQ - F - MV-001

SECTION

6.0

6.0 PERFORMANCE RECORDS

DATE

Jun.17, 2015

PAGE

11 OF 16

NO	CUSTOMER	AREA	Q'TY	SPECIFICATION				YEAR	REMARK
				TYPE	F. PLATE	SIZE	CH.		
221	GORI NUCLEAR POWER STATION	GORI	1	SEMI-AUTO	RECESS	□800	42	2005	
222	DONGBU ELECTRONICS	EUM SEONG	1	FULL-AUTO	M.P. MEM'	□1200	50	2005	
223	L.S NIKKO	ONSAN	1	FULL-AUTO	M.P. MEM'	□1200	80	2006	
224	KOREA POLYOL (NANJING/CHINA)	NANJING CHINA	2	SEMI-AUTO	RECESS	□1000	20	2006	
225	SAMSUNG TECHWIN CO.,LTD.	CHANG WON	1	FULL-AUTO	M.P. MEM'	□1200	78	2006	
226	SAMTOP ENGINEERING CO., LTD.	ANDONG	1	SEMI-AUTO	RECESS	□1200	76	2006	
227	SAMSUNG ELECTRONICS CO.,LTD.	TANG JUNG	1	FULL-AUTO	M.P. MEM'	□1500	100	2006	SAMSUNG ENG'G
228	SAMYEONG PLANT CO.,LTD.	ANYANG	1	SEMI-AUTO	RECESS	□1500	70	2006	JEIL
229	KOREA MIDLAND POWER CO.,LTD.	PORYUNG	1	FULL-AUTO	M.P. MEM'	□1000	54	2006	SAMYANG W & S IND.
230	YOUNGPOONG CORP. (SUKPO ZINC REFINERY)	SUKPO	6	FULL-AUTO SEMI-AUTO	M.P. MEM' RECESS	□1500	70, 50	2006	
231	SAMSUNG ELECTRO-MECHANICS CO.,LTD.	BUSAN	1	FULL-AUTO	M.P. MEM'	□1200	102	2006	SAMSUNG ENG'G
232	SAMYEONG PLANT CO.,LTD.	CHONAN	1	SEMI-AUTO	RECESS	□2000	100	2006	YOUNGHUNG
233	SAMYEONG PLANT CO.,LTD.	JOCHI WON	3	SEMI-AUTO	RECESS	□2000	100	2006	INSUN ENT
234	POSCO/ZPSS	CHINA	2	FULL-AUTO	M.P. MEM'	□1200	50	2007	
235	SAMYEONG PLANT CO.,LTD.	SAM CHEOK	1	SEMI-AUTO	RECESS	□1500	100	2007	DONGMAK
236	SKEC/SK CORPORATION	ULSAN	1	AUTO	RECESS	□1000	70	2007	
237	POSCO/POSREC	POHANG	4	AUTO	M.P. MEM' RECESS	□1000	46, 42	2007	
238	SAMSUNG ELECTRONICS CO.,LTD.	TANG JUNG	2	FULL-AUTO	M.P. MEM'	□1500	100	2007	SAMSUNG ENG'G
239	SAMYEONG PLANT CO.,LTD.	SHENZHEN CHINA	1	AUTO	RECESS	□1500	100	2007	
240	BUSAN WATER AUTHORITY	BUSAN	1	FULL-AUTO	M.P. MEM'	□1200	70	2007	MYEONGJANG TREATMENT CENTER
241	BUSAN WATER AUTHORITY	BUSAN	5	FULL-AUTO	M.P. MEM'	□1200	94	2007	DUKSAN TREATMENT CENTER
242	KOREA POLYOL (NANJING/CHINA)	NANJING CHINA	1	SEMI-AUTO	RECESS	□1000	20	2007	



PREQUALIFICATION SUMMARY

DOC. NO.

PQ - F - MV-001

SECTION

6.0

6.0 PERFORMANCE RECORDS

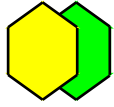
DATE

Jun.17, 2015

PAGE

12 OF 16

NO	CUSTOMER	AREA	Q'TY	SPECIFICATION				YEAR	REMARK
				TYPE	F. PLATE	SIZE	CH.		
243	SAMSUNG FINE CHEMICALS	DAE JEON	1	SEMI-AUTO	M.P. MEM'	□630	28	2007	
244	L.S NIKKO	ONSAN	1	AUTO	M.P. MEM'	□1200	26	2008	
245	SAMSUNG ELECTRONICS CO.,LTD.	TANG JUNG	1	FULL-AUTO	M.P. MEM'	□1500	100	2008	SAMSUNG ENG'G
246	SAMSUNG SDI	CHEON AN	1	FULL-AUTO	M.P. MEM'	□1000	52	2008	
247	CJ CHEILJEDANG	SEOUL	1	PILOT	RECESS	□470	10	2008	
248	POSCO/APF	POHANG	1	AUTO	RECESS	□1000	54	2008	GENERAL SYSTEM
249	SAMSUNG TOTAL	DANGJIN	1	FULL-AUTO	M.P. MEM'	□1200	66	2008	
250	SAMSUNG SDI	CHEON AN	1	FULL-AUTO	M.P. MEM'	□1200	58	2008	
251	HYUNDAI STEEL COMPANY	DANGJIN	5	FULL-AUTO	M.P. MEM'	□1500	110	2008	HYUNDAI ROTEM
252	JPS MICRO TECH.	BUSAN	1	MANUAL	P+FRAME	□250	13	2008	
253	JPS MICRO TECH.	BUSAN	1	MANUAL	P+FRAME	□250	10	2008	
254	CFC TERAMATE	BUSAN	1	MANUAL	P+FRAME	□250	8	2009	
255	CLEAN KOREA	ANGANG	1	MANUAL	P+FRAME	□660	24	2009	
256	YOUNG POONG COOPERATION	SEOKPO	8	AUTO	M.P. MEM'	□1500	70	2009	
257	L.S NIKKO	ONSAN	1	FULL-AUTO	M.P. MEM'	□1200	90	2009	
258	HYUNDAI OIL BANK	DAESAN	1	AUTO	RECESS	□1000	70	2009	
259	SAMSUNG ELECTRONICS CO.,LTD.	TANG JUNG	2	FULL-AUTO	M.P. MEM'	□1500	130	2009	SAMSUNG ENG'G
260	SAMSUNG ELECTRO-MECHANICS CO.,LTD.	CHINA	2	FULL-AUTO	M.P. MEM'	□1000	70	2009	
261	GRM / LS NIKKO	DANYANG	1	FULL-AUTO	M.P. MEM'	□1200	70	2010	SEHWA ENSTECH
262	BOKYUNG	GYEONG JU	1	MANUAL	RECESS	□470	20	2010	
263	SAMSUNG ELECTRONICS CO.,LTD.	TANG JUNG	2	FULL-AUTO	M.P. MEM'	□1500	130	2010	SAMSUNG ENG'G
264	TORECOM	ASAN	3	AUTO	RECESS	□1200	34/42/46	2010	



SEST

PREQUALIFICATION SUMMARY

DOC. NO.

PQ - F - MV-001

SECTION

6.0

6.0 PERFORMANCE RECORDS

DATE

Jun.17, 2015

PAGE

13 OF 16

NO	CUSTOMER	AREA	Q'TY	SPECIFICATION				YEAR	REMARK
				TYPE	F. PLATE	SIZE	CH.		
265	SAMSUNG ELECTRO-MECHANICS CO.,LTD.	BUSAN	2	AUTO	RECESS	□630	28	2010	
266	SAMSUNG SDI	CHEON AN	1	FULL-AUTO	M.P. MEM'	□1200	58	2010	
267	HYNIX SEMICONDUCTOR	ICHEON	2	FULL-AUTO	M.P. MEM'	□1200	32	2010	HANSU TECHNICAL
268	SAMSUNG ELECTRO-MECHANICS CO.,LTD.	PHILIPPINES	1	FULL-AUTO	M.P. MEM'	□1000	30	2010	
269	SAMSUNG ELECTRONICS CO.,LTD.	CHEON AN	2	FULL-AUTO	M.P. MEM'	□1500	100	2010	SAMSUNG ENG'G
270	SAMSUNG SMD	CHEON AN	1	FULL-AUTO	M.P. MEM'	□1200	84	2010	SAMSUNG ENG'G
271	RIST	POHANG	1	MANUAL	P+FRAME	□470	10	2010	
272	IRIDOS CO.,LTD.	ONSAN	3	SEMI-AUTO	RECESS	□1200	44	2010	DAEHAN SOLVAY SPEICAL CENICALS
273	SAMSUNG ELECTRONICS CO.,LTD.	TANG JUNG	1	FULL-AUTO	M.P. MEM'	□1500	130	2010	SAMSUNG ENG'G
274	SAMSUNG ELECTRO-MECHANICS CO.,LTD.	SUWON	1	FULL-AUTO	M.P. MEM'	□1000	32	2010	SAMSUNG ENG'G
275	LS NIKKO	ONSAN	1	FULL-AUTO	M.P. MEM'	□1200	58	2010	
276	IRIDOS CO.,LTD.	ONSAN	1	PILOT	P+FRAME	□250	6	2010	DAEHAN SOLVAY SPEICAL CENICALS
277	SAMSUNG ELECTRO-MECHANICS CO.,LTD.	PHILIPPINES	1	SEMI-AUTO	RECESS	□630	30	2010	
278	SAMSUNG ELECTRONICS CO.,LTD.	CHEON AN	1	FULL-AUTO	M.P. MEM'	□1500	70	2010	SAMSUNG ENG'G
279	YOUNG POONG COOPERATION	SEOKPO	2	SEMI-AUTO	RECESS	□1500	70	2010	X-METECH
280	HANSU TECHNICAL SERVICE LTD	SUNGNA M	1	PILOT	RECESS	□470	10	2010	
281	ANYTECH CO.,LTD	SUWON	1	PILOT	P+FRAME	□250	13	2010	
282	LS NIKKO	ONSAN	1	FULL-AUTO	M.P. MEM'	□1200	84	2011	HANSU TECHNICAL
283	SAMSUNG ELECTRO-MECHANICS CO.,LTD.	CHEON JIN	1	FULL-AUTO	M.P. MEM'	□1200	44	2011	CHINA
284	SAMSUNG ELECTRO-MECHANICS CO.,LTD.	CHEON JIN	2	SEMI-AUTO	RECESS	□630	28	2011	CHINA
285	DEAHAN INDUSTRY	GEOCHAN G	1	PILOT	RECESS	□470	20	2011	
286	LG DISPLAY CO., LTD	PAJU	2	AUTO	M.P. MEM'	□1500	100	2011	GS E& C



PREQUALIFICATION SUMMARY

DOC. NO.

PQ - F - MV-001

SECTION

6.0

6.0 PERFORMANCE RECORDS

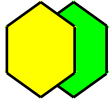
DATE

Jun.17, 2015

PAGE

14 OF 16

NO	CUSTOMER	AREA	Q'TY	SPECIFICATION				YEAR	REMARK
				TYPE	F. PLATE	SIZE	CH.		
287	SAMSUNG ELECTRO-MECHANICS CO.,LTD.	DAEJUN	1	FULL-AUTO	M.P. MEM'	□1200	68	2011	
288	POSCO / NO.3 CRM	KWANG-YANG	2	FULL-AUTO	M.P. MEM'	□1500	54	2011	HANMI ENTEC
289	POSCO / NO.4 CRM	KWANG-YANG	2	FULL-AUTO	M.P. MEM'	□1500	64	2011	HANMI ENTEC
290	UKSEUNG CHEMICAL CO.,LTD.	BUSAN	1	SEMI-AUTO	RECESS	□1200	62	2011	
291	DONGBOO STEEL CO.,LTD.	DANGJIN	1	FULL-AUTO	M.P. MEM'	□800	26	2011	
292	SAMSUNG ELECTRONICS CO.,LTD.	TANG JUNG	4	FULL-AUTO	M.P. MEM'	□1500	130	2011	SAMSUNG ENG'G
293	TORECOM	ASAN	2	AUTO	RECESS	□1000	22	2011	
294	TORECOM	ASAN	1	AUTO	RECESS	□1000	56	2011	
295	SEOWON CHEMICAL	YANGSAN	1	FULL-AUTO	M.P. MEM'	□1000	42	2011	
296	BIO SAINT CO.,LTD.	ANYANG	1	AUTO	RECESS	□630	12	2011	
297	KUKDO CHEMICAL CO.,LTD.	KUNSHAN	2	SEMI-AUTO	RECESS	□1000	20	2011	
298	POSCO / APF	TURKEY	1	SEMI-AUTO	RECESS	□1000	40	2011	KOCAT
299	LS NIKKO	ONSAN	1	FULL-AUTO	M.P. MEM'	□1200	62	2011	
300	LS NIKKO	ONSAN	1	AUTO	M.P. MEM'	□1200	8	2011	
301	INSTITUTE for ADVANCED ENGINEERING	YONGIN	1	SEMI-AUTO	M.P. MEM'	□630	14	2012	
302	SAMSUNG FINE CHEMICALS	ULSAN	1	FULL-AUTO	RECESS	□1000	46	2012	
303	HYUNDAI HYSKO	DANGJIN	1	FULL-AUTO	M.P. MEM'	□1200	50	2012	
304	YOUNG POONG COOPERATION	SEOKPO	1	FULL-AUTO	M.P. MEM'	□1500	60	2012	
305	LS NIKKO	ULSAN	1	PILOT	RECESS	□470	8	2012	
306	POSCO / CGL #2	MEXICO	2	SEMI-AUTO	RECESS	□1500	70	2012	
307	CFC TERAMATE	BUSAN	1	PILOT	P+FRAME	□250	10	2012	
308	KOREA SOUTH-EAST POWER CO.,LTD.	YOUNG HEUNG	1	FULL-AUTO	M.P. MEM'	□1200	40	2012	KC-COTTRELL



SEST

PREQUALIFICATION SUMMARY

6.0 PERFORMANCE RECORDS

DOC. NO.

PQ - F - MV-001

SECTION

6.0

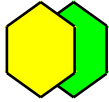
DATE

Jun.17, 2015

PAGE

15 OF 16

NO	CUSTOMER	AREA	Q'TY	SPECIFICATION				YEAR	REMARK
				TYPE	F. PLATE	SIZE	CH.		
309	CHEONAN 3rd. INDUSTRIAL COMPLEX COUNCIL	CHEONAN	2	FULL-AUTO	M.P. MEM'	□1500	100	2012	
310	SAMSUNG FINE CHEMICALS	ULSAN	1	FULL-AUTO	M.P. MEM'	□1000	60	2012	
311	IT-CHEM CO.,LTD.	OHCHANG	1	PILOT	RECESS	□470	12	2012	
312	KISWEL CO.,LTD.	CHANG WON	1	AUTO	M.P. MEM'	□1000	60	2012	
313	LS NIKKO	ULSAN	1	PILOT	RECESS	□470	8	2012	
314	HYUNDAI HYSKO	ULSAN	1	MANUAL	RECESS	□630	12	2012	
315	GS ECOMETAL	ULSAN	1	FULL-AUTO	RECESS	□1000	60	2012	
316	NIPPON ELECTRIC GLASS, Limited	PAJU	1	FULL-AUTO	M.P. MEM'	□1000	20	2012	
317	LS NIKKO	ONSAN	1	FULL-AUTO	M.P. MEM'	□1200	50	2012	
318	SAMSUNG ELECTRO-MECHANICS CO.,LTD.	CHINA	2	FULL-AUTO	M.P. MEM'	□1000	70	2012	Capa-up
319	TAEKWANG INDUSTRIAL CO.,LTD	ULSAN	1	SEMI-AUTO	P+FRAME	□ 610	25	2013	
320	DONG-SUH CHEMICAL CO.,LTD	INDONESIA	3	SEMI-AUTO	M.P. MEM'	□1000	58	2013	
321	LS NIKKO	ULSAN	3	PILOT	RECESS	□630	16	2013	
322	HANSU TECHNICAL SERVICE LTD	GONGJU	1	MANUAL	RECESS	□470	10	2013	
323	YOUNG POONG CORPORATION	SEOKPO	1	AUTO	M.P. MEM'	□1500	66	2013	
324	KD CHEMICAL	ULSAN	1	SEMI-AUTO	M.P. MEM'	□800	20	2013	
325	KOREA EAST-WEST POWER CO.,LTD	DANGJIN	1	AUTO	M.P. MEM'	□1200	70	2013	ENTECH E&C
326	KOREA WESTERNPOWER CO.,LTD	TAEAN	1	FULL-AUTO	M.P. MEM'	□1200	40	2013	Green entec
327	LS Nikko	ULSAN	1	FULL-AUTO	M.P. MEM'	□800	30	2013	
328	LS Nikko	ULSAN	1	FULL-AUTO	M.P. MEM'	□1000	42	2013	
329	LS Nikko	ULSAN	1	FULL-AUTO	M.P. MEM'	□1200	18	2013	
330	LS Nikko	ULSAN	1	FULL-AUTO	M.P. MEM'	□1200	66	2013	
331	FIRST MCA CO.,LTD	CHOONG JU	3	FULL-AUTO	M.P. MEM'	□1500	80	2013	



SEST

PREQUALIFICATION SUMMARY

6.0 PERFORMANCE RECORDS

DOC. NO.

PQ - F - MV-001

SECTION

6.0

DATE

Jun.17, 2015

PAGE

16 OF 16

NO	CUSTOMER	AREA	Q'TY	SPECIFICATION				YEAR	REMARK
				TYPE	F. PLATE	SIZE	CH.		
332	POSCO	KWANG-YANG	1	FULL-AUTO	M.P. MEM'	□1000	44	2013	HANMI ENTEC
333	LS Nikko	ULSAN	1	FULL-AUTO	M.P. MEM'	□1200	40	2013	
334	POSCO	POHANG	1	FULL-AUTO	M.P. MEM'	□ 630	30	2013	ENTECH E&C
335	MSC	YANGSAN	1	FULL-AUTO	M.P. MEM'	□1000	60	2013	
336	FIRST MCA CO.,LTD	CHOONG JU	1	FULL-AUTO	ALL. MEM'	□1200	44	2013	
337	YOUNG POONG CORPORATION	SEOKPO	1	AUTO	M.P. MEM'	□1200	16	2013	
337	YOUNG POONG CORPORATION	SEOKPO	1	AUTO	M.P. MEM'	□1200	26	2013	
337	YOUNG POONG CORPORATION	SEOKPO	1	AUTO	RECESS	□1200	10	2013	
338	HYUNDAI HYSCO	DANGJIN	1	MANUAL	RECESS	□ 630	12	2013	
339	LS Nikko	ULSAN	1	PILOT	RECESS	□ 250	14	2013	HANWOUL ENG'G
340	HANSU TECHNICAL SERVICE LTD	PAJU	1	FULL-AUTO	M.P. MEM'	□1000	20	2014	
341	LS Nikko	ONSAN	1	PILOT	RECESS	□ 250	5	2014	
342	YOUNG POONG CORPORATION	SEOKPO	2	FULL-AUTO	M.P. MEM'	□1500	70	2014	
343	SAMSUNG ELECTRONICS CO.,LTD.	TANG JUNG	3	FULL-AUTO	M.P. MEM'	□1500	130	2014	
344	SAMSUNG ELECTRO-MECHANICS CO.,LTD.	CHINA	2	FULL-AUTO	M.P. MEM'	□1500	60	2014	
345	LS Nikko	ULSAN	5	FULL-AUTO	M.P. MEM'	□1200	84	2014	
346	SAMSUNG ELECTRO-MECHANICS CO.,LTD.	VIETNAM	1	FULL-AUTO	M.P. MEM'	□1500	110	2014	
347	LS Nikko	CHILE	7	FULL-AUTO	M.P. MEM'	□1200	56	2014	
348	SAMSUNG SDI CO.,LTD.	ULSAN	1	FULL-AUTO	M.P. MEM'	□1000	34	2014	
349	SAMSUNG SDI CO.,LTD.	CHEON JIN	1	FULL-AUTO	M.P. MEM'	□1000	52	2014	CHINA
350	BUKPYUNG POWER PLANT	DONGHAE	1	FULL-AUTO	M.P. MEM'	□1500	50	2014	ENTECH E&C
351	HANWHA CORPORATION	YEOSU	1	PILOT	RECESS	□470	8	2014	
352	TAEAN POWER PLANT	TAEAN	1	FULL-AUTO	M.P. MEM'	□1200	80	2014	ENTECH E&C

 SEST	PREQUALIFICATION SUMMARY	DOC. NO.	PQ - F - MV-001	
		SECTION	7.0	
	7.0 SHOP FACILITIES		DATE	Jun.17, 2015
			PAGE	1 OF 2

7.1 MAJOR FACILITY

NO	EQUIPMENT NAME	MODEL	CAPACITY	Q'TY	DATE	MAKER	REMARK
1	HOIST CRANE		20TON	1	2002	BAN DO CRANE IND.	
			10TON	2	2002	BAN DO CRANE IND.	
2	LATHE	DMB-3	1000*3000L	1	1984	DAEGU HEAVY IND.	
		DLSL560	560*2000	1	1986	HANKOOK HEAVY IND.	
		PROTEC480	480*1100L	1	1997	DAEGU HEAVY IND.	
3	BORING M/C		Φ80	1	1980	SINADA(JAPAN)	
4	RADIAL DRILLING M/C	COR-1500	500*650*400	1	1978	CHUNGGONG IND.	
5	ANGLE BENDING M/C	SUM-002	6T*600W	1	1988	SUMJIN IND.	
6	SHEARING M/C	SUM-001	6T*1800W	1	1984	SUMJIN IND.	
7	SLOTTER M/C	DY-250		1	1997	DAE YOUNG IND.	
8	TABLE DRILLING M/C	NBL-420	Φ13	2	1987	HAN SHIN IND.	
9	SHAPE CUTTING M/C	SH-50		1	1988	SHIN HUNG IND.	
10	MAGNETIC DRILL M/C	KMD-3	Φ3	1	1990	KAE SUNG MAG.	
11	PORTABLE CUT M/C	YK-300	100-1000m/m	1	1988	VICTORY CO.	
		YK-200	100-500m/m	1	1988	VICTORY CO.	
12	DRY OVEN	SUM-004		1	1988	SUMJIN IND..	
13	TURNING ROLLER	SUM-005	30TON	1	1998	SUMJIN IND..	
14	AIR SPRAYER		45:01:00	1	1996	HAN SHIN SO.	
15	AIR COMPRESSOR	AIRCOM-5	5HP	1	1994	DAE DONG IND.	
		AIRCOM-5	5HP	1	1997	DAE DONG IND.	
16	CO2 WELDING M/C	NEW500	500A	1	1994	SEIL MACHINE	
		HDWA-500	500A	1	1989	SEIL MACHINE	
		SD-500A	500A	2	1996	SEIL MACHINE	
17	TIG WELDING M/C	DHD 500	500A	1	1990	DAE HAN WELDING	
		T&A	500A	1	1997	DAE HAN WELDING	
		TR-400	400A	1	1986	DAE LIM WELDING	
		INVER TIG	300A	1	1996	YISU WELDING	
18	ARGON WELDING M/C	TR-200	200A	1	1996	DAE LIM WELDING	
		DS-300DT	300A	1	1988	SEIL MAHINE	
19	AIR PLASMA M/C	DHDA-70	100A	1	1996	DAE LIM WELDING	
		AUT-120	120A	1	1988	SEIL MAHINE	
20	GAUGING M/C	HDGA800	800A	1	1996	SEIL MACHINE	
21	ARC WELDING M/C	DHA-370	20KW	15	1995	DAE HAN WELDING CO.	
		DL-AL	15KW	6	1997	DONGNAM WELDING CO.	

	PREQUALIFICATION SUMMARY	DOC. NO.	PQ - F - MV-001	
		SECTION	7.0	
	7.0 SHOP FACILITIES		DATE	Jun.17, 2015
			PAGE	2 OF 2

7.2 MEASURING & TEST EQUIPMENT

NO	NAME	CAPACITY	Q'TY	DATE	MAKER	CONTROL DEP'T	REMARK
1	U.T THICKNESS GAUGE	75mm	1	1995	T-MIKE (USA)	Q.C	
2	COATING THICKNESS GAUGE	0-1000 μ m	1	1990	HANSONG	Q.C	
3	DIAL GAUGE	0.01-10 μ m	1	1985	MITUTOYO (JAPAN)	Q.C	
4	CYLINDER GAUGE	0-400mm	1	1990	MITUTOYO (JAPAN)	Q.C	
5	MICROMETER	0-400mm	1	1990	MITUTOYO (JAPAN)	Q.C	
6	VERNIER CALIPERS	600/0.05mm	4	1990	MITUTOYO (JAPAN)	Q.C	
7	VERNIER CALIPERS	1000/0.05mm	1	1990	MITUTOYO (JAPAN)	Q.C	
8	MOISTURE METER	-	1	1990	SHIMAZU (JAPAN)	Q.C	
9	ELECTRONIC SCALE	0.2-12kg	1	1990	SHIMAZU (JAPAN)	Q.C	
10	SS DENSITY MEASUREMENT EQUIPMENT	-	1	1993	SHIMAZU (JAPAN)	Q.C	
11	FILTER PRESS PILOT	250*5CH	1	1995	SUMJIN	TECH.DEPT	
		470*5CH	1	1995	SUMJIN	TECH.DEPT	

 SEST	PREQUALIFICATION SUMMARY	DOC. NO.	PQ - F - MV-001
		SECTION	8.0
	8.0 TECHNICAL STANDARD	DATE	Jun.17, 2015
		PAGE	1 OF 1

8.1 TECHNICAL DATA AND STANDARD

TECHNICAL STANDARD	YEAR	PUBLISHER	REMARKS
ASME SEC.VIII, DIV.1, DIV.2	2001	ASME	
ANNUAL BOOK OF ASTM STANDARDS	1998	ASTM	
ASME/ANSI SERIES "B"	1998	ASME	
STANDARDS OF THE TEMA	1999	TEMA	
WELDED STEEL TANKS FOR OIL STORAGE (API650)	1988	API	
WELDED STEEL TANKS FOR OIL STORAGE (JIS B8501)	1985	JPI	
PRESSURE VESSEL HANDBOOK	1986	EUGENE F.MEGYESY	
JIS STANDARD FOR PRESSURE VESSEL	1989	JSA	
JIS MATERIAL HANDBOOK	2000	JSA	
MANUAL OF STEEL CONSTRUCTION	1989	AISC	
MINIMUM DESIGN LOADS FOR BUILDINGS AND OTHER STRUCTURES (ANSI A58.1)	1982	ANSI/ASCE	
STRENGTH OF MATERIALS	1972	McGRAW-HILL	
STRUCTURAL WELDING CODE OF STEEL	2000	AWS	
FLUID FLOW MANUAL	1970	CHEVRON	
COMPUTER DESIGN SYSTEM (ACAD14)	-	-	
COMPUTER DESIGN SYSTEM (ACAD2000i)	-	-	